

**Background colour**  
Colour is always an issue. However, both light and dark backgrounds are a suitable starting point for well designed displays.

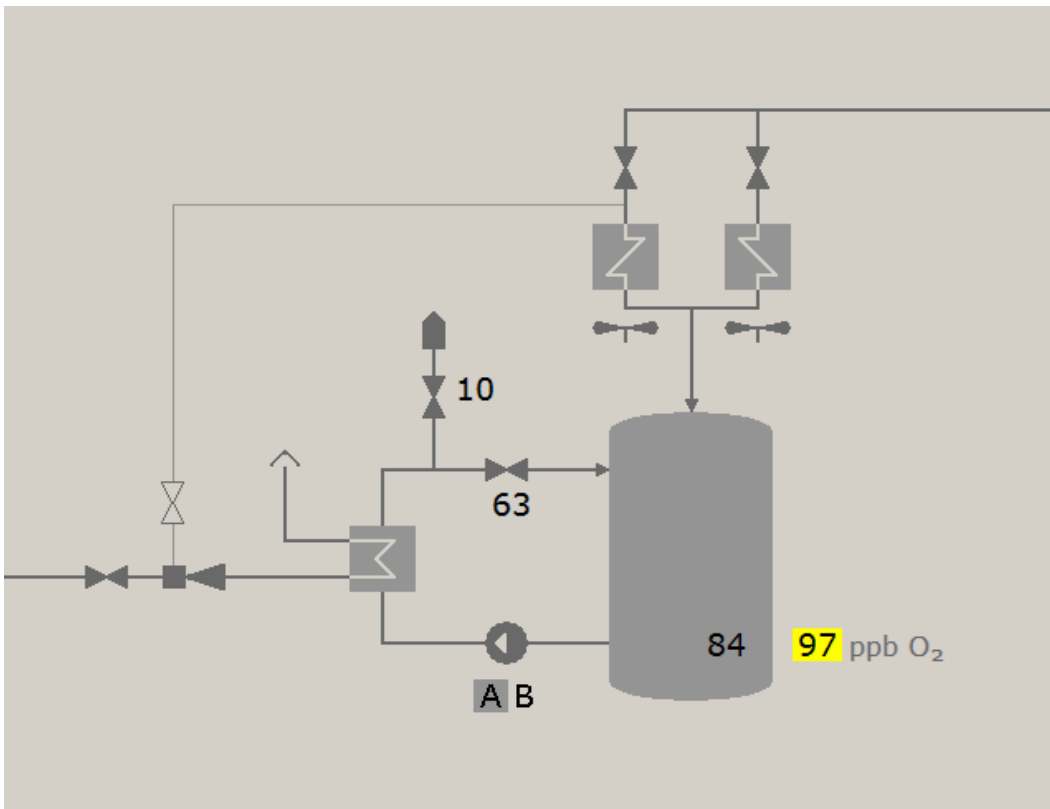
## Remote control

Remote operation of power plants is a modern trend in the energy business.

It appears to be possible to put 3 or more plants under supervision of one operator, but this requires a high level of standardization in process display design. Information presentation and control should definitely be simple and consistent.

On the other hand to prevent operators from mixing up their units, it is important to provide enough visual cues.

ErgoS uses various design aids like HCI-convention documents, static and dynamic display examples (prototypes) and mock-ups to find and evaluate optimal design solutions with help of end users and application engineers.



## Display reduction

Information about task characteristics and operator knowledge can help to choose the appropriate level of static information.

Experienced operators are primarily interested in dynamic information, like process values and setpoints. When static information is applied moderately, a reduction of 50% in visual elements can often be achieved. A hierarchical organized symbol set may result in an extra 25% reduction of required displays.